



ATLAS BP8000

8,000 lb. Capacity

Two-Post Baseplate Lift

INSTALLATION & OPERATION MANUAL



INDIANA

5800 MASSACHUSETTS AVE.
INDIANAPOLIS, IN 46218

PHONE: (800) 262-1950
FAX: (317) 542-1448

DELAWARE

250 EXECUTIVE DRIVE, SUITE 1
NEWARK, DE 19702

PHONE: (800) 715-1950
FAX: (302) 894-9136

GEORGIA

5405 BUFORD HWY.
NORCROSS, GA 30071

PHONE: (800) 768-4104
FAX: (678) 781-0149

ARIZONA

8399 W VAN BUREN ST., SUITE 210
TOLLESON, AZ 85353

PHONE: (800) 602-9928
FAX: (602) 490-3495

NEW HAMPSHIRE

8 INDUSTRIAL DRIVE
HUDSON, NH 03051

PHONE: (800) 360-0053

FLORIDA

12250 NW 25TH ST., SUITE 112
MIAMI, FL 33182

PHONE: (800) 305-5609

CONTENTS

I. Product Features and Specifications	3
II. Installation Requirement	5
III. Steps of Installation	6
IV. Exploded View	17
V. Test Run	19
VI. Operation Instruction.....	22
VII.Maintenance.....	23
VIII. Trouble Shooting.....	24
IX. Parts List.....	25

I. PRODUCT FEATURES AND SPECIFICATIONS

FLOORPLATE CHAIN-DRIVE MODEL FEATURES

Model BP8000 (See Fig. 1)

- Compact design
- Dual hydraulic cylinders, designed and made on ANSI standards, utilizing NOK oil seal for cylinder
- Self- lubricating UHMW Polyethylene sliders and bronze bush
- Single-point safety release, and dual safety design
- Adjustable and dual screwed rubber pad as standard supply.

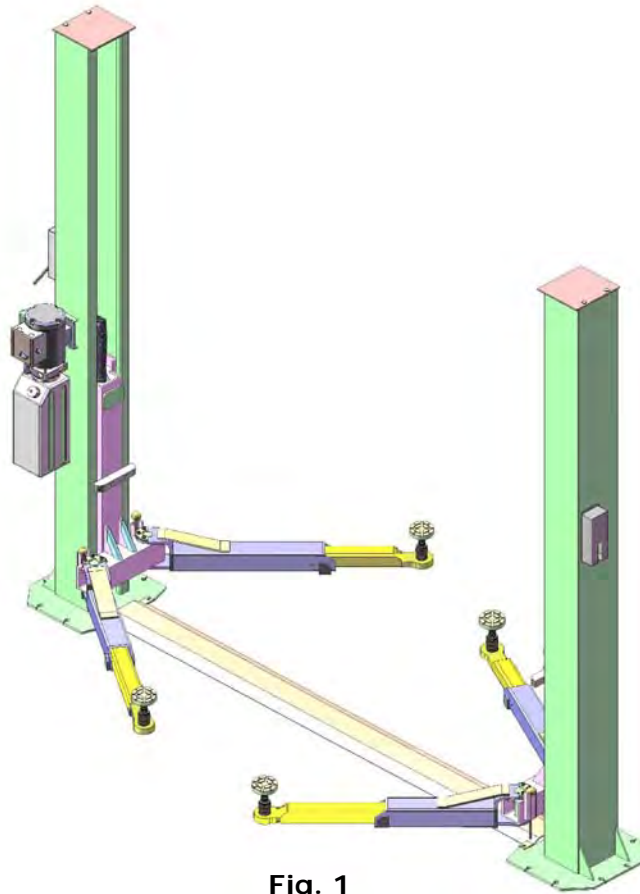


Fig. 1

SPECIFICATIONS

Model	Style	Lifting Capacity	Lifting Time	Lifting Height	Lifting Height w/ Adapters	Overall Height	Overall Width	Width Between Posts	Minimum Pad Height	Motor
BP8000	Floor plate Chain-drive	8,000 lbs	45 S	70 1/2"	71 3/8"	108"	132"	109 5/8"	3 1/2"	2.0/3.0 HP

Arm Swings View

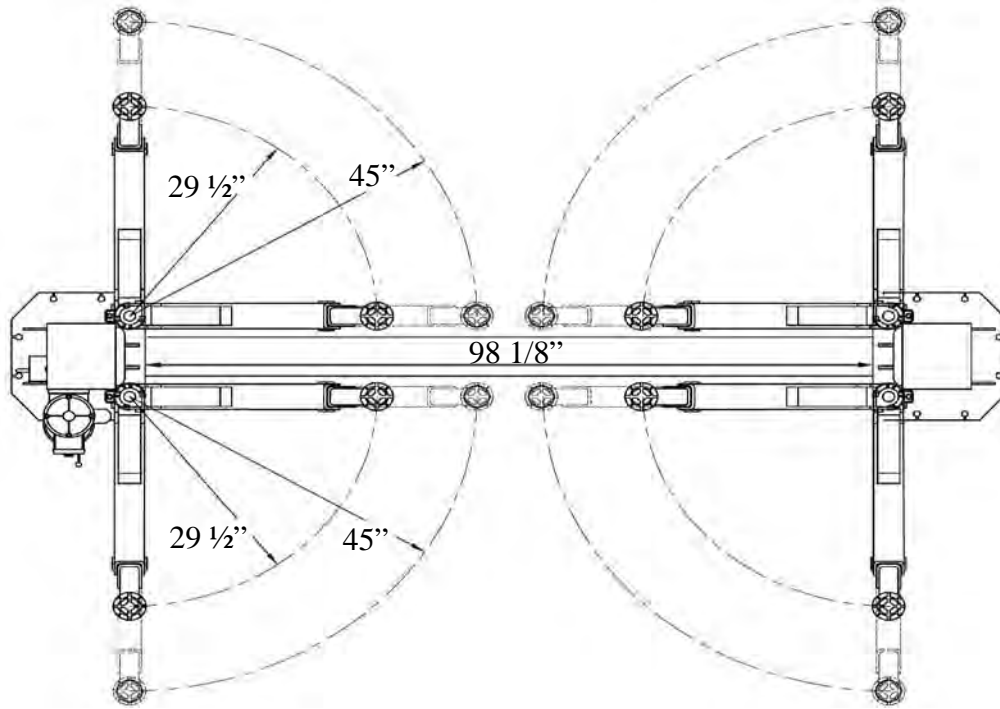


Fig. 2

II. INSTALLATION REQUIREMENT

A. TOOLS REQUIRED

- ✓ Rotary Hammer Drill ($\Phi 19$)



- ✓ Hammer



- ✓ Level Bar



- ✓ English Spanner (12")



- ✓ Ratchet Spanner With Socket (30#)



- ✓ Wrench set

(10#, 13#, 14#, 15#, 17#, 19#, 24#, 27#)



- ✓ Carpenter's Chalk



- ✓ Screw Sets



- ✓ Tape Measure (7.5m)



- ✓ Pliers



- ✓ Socket Head Wrench (6#)



- ✓ Lock Wrench



Fig. 3

B. CONCRETE SPECIFICATIONS (See Fig. 4).

Concrete Specifications Must Be Adhered To As Follows.

Failure To Do So May Result In Lift And/ Or Vehicle Falling.

1. Concrete must be 4" thick minimum and without reinforcing steel bars, and must be cured totally before the installation.
2. Concrete must be in good condition and must be of test strength 3,000 psi minimum.
3. Floors **must be level** and no cracks.

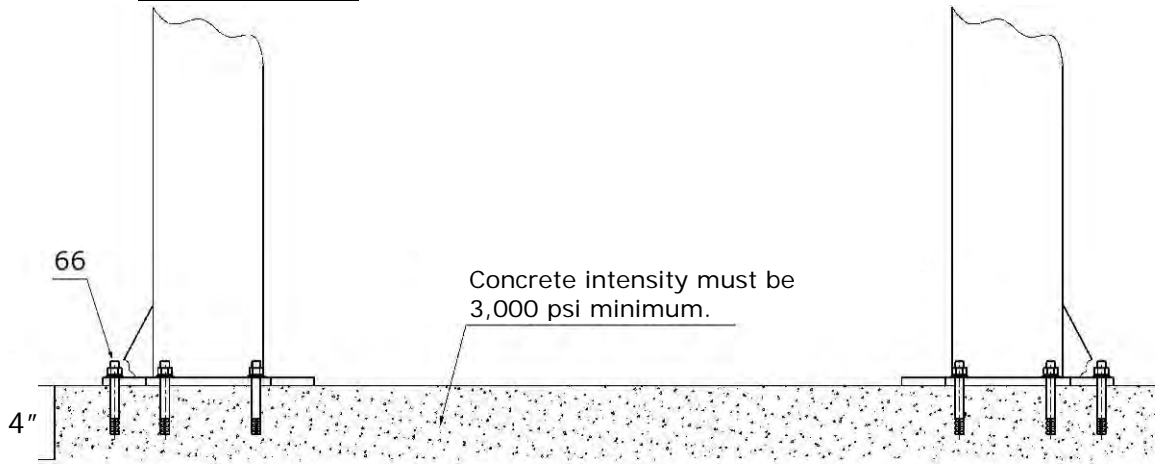


Fig. 4

C. POWER SUPPLY

The capacity of power must be 3 HP minimum. The line must be 2.5 mm² minimum and in good condition of contacting with floor.

III. STEPS OF INSTALLATION

A. Location of Installation

Check and insure the installation location (concrete, layout, space size etc.) is suitable for lift installation.

B. Use a carpenter's chalk line to establish installation layout of base plate (See Fig. 5).

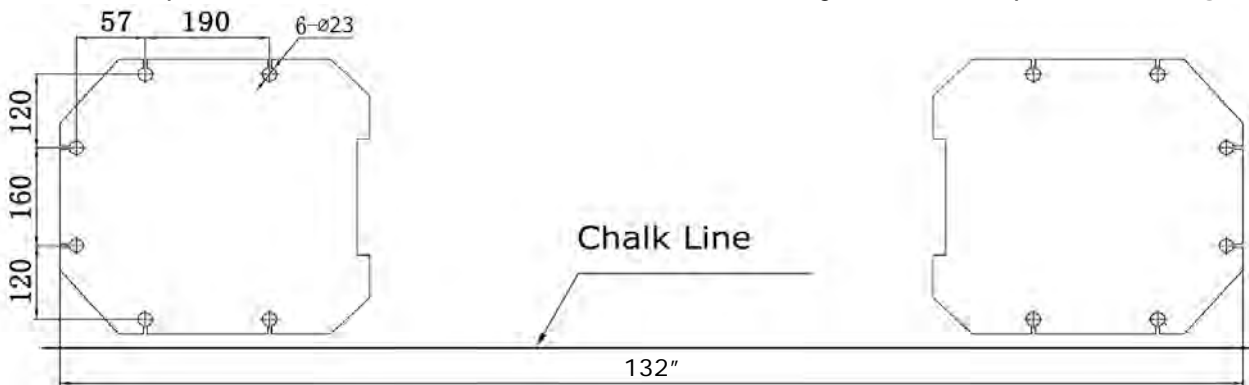


Fig. 5

C. Check the Parts Before Assembly.

1. Packaged lift and Hydraulic Power Unit (See Fig. 6).



Fig. 6

2. Move aside the lift with fork lift or hoist, and open the outer packing carefully (See Fig. 7).

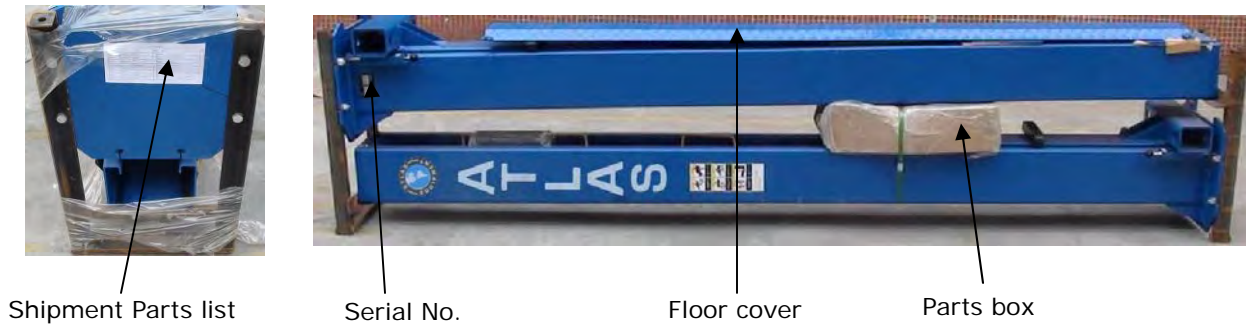


Fig. 7

3. Take off the parts from upper and inside the column, then take out the parts box, and check the parts according to the shipment parts list (See Fig. 8).



Fig. 8

D. Position Power side Post

Lay down two posts on the installation site parallel to each other. Position the Power side Post according to the actual installation environment. Usually, it is suggested to install Power side Post on the front-right side from which vehicles are driven to the lift (See Fig. 12).

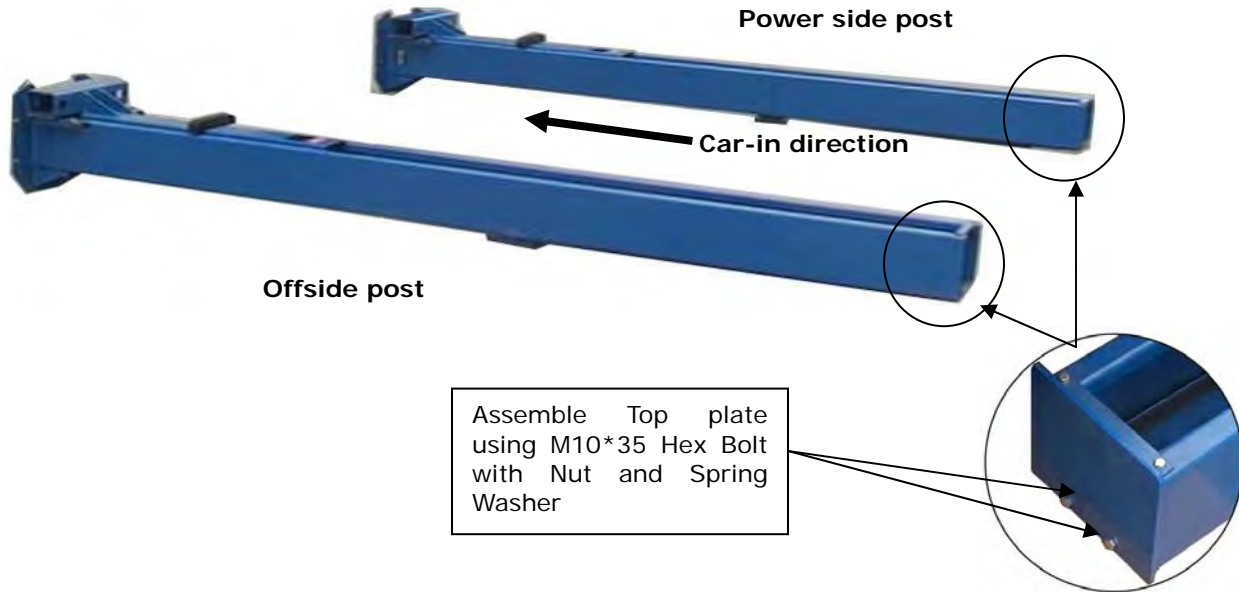
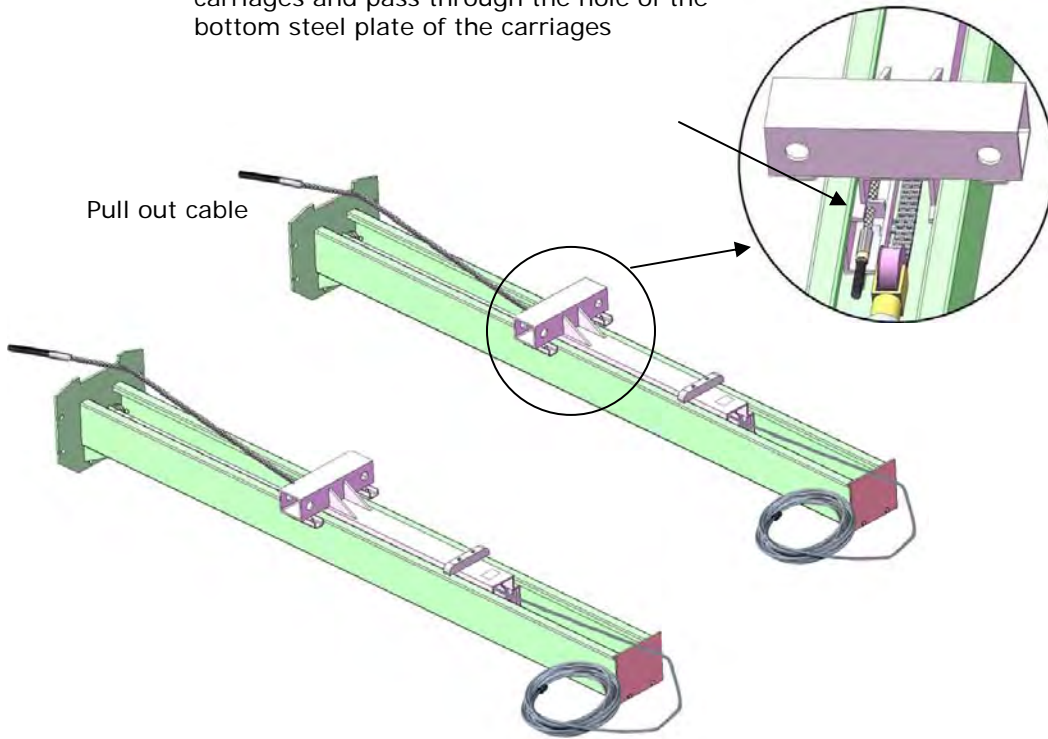


Fig. 12

E. Connecting the Cables

1. Put down posts and then push the carriages higher than chain pulley (See Fig. 13).

Push the carriages higher than chain pulley, cable passes through the top of the carriages and pass through the hole of the bottom steel plate of the carriages



2. Push the carriages to the bottom of the columns. (See Fig. 14)

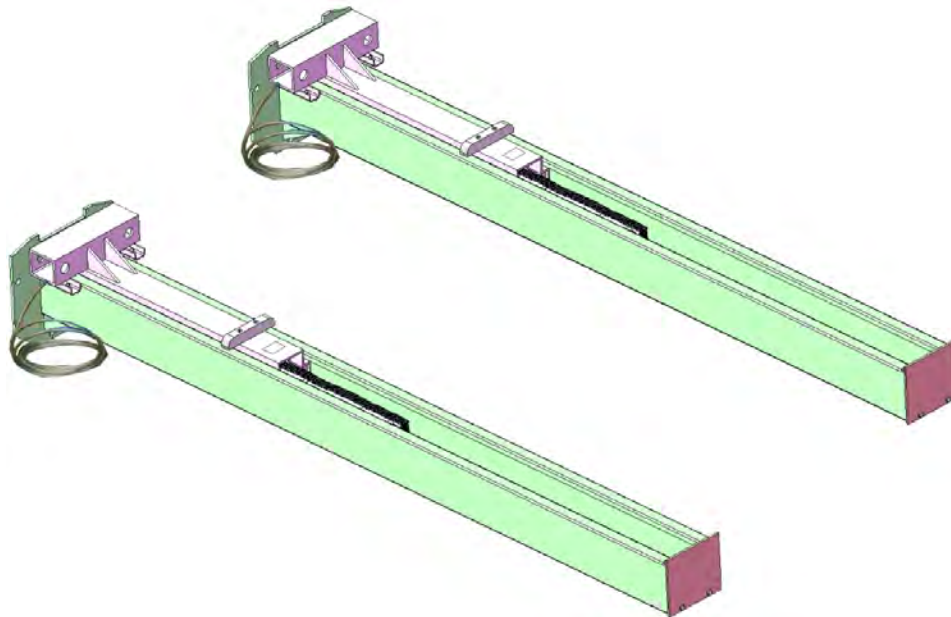


Fig. 14

F. Position posts (See Fig. 15)

Check the posts with a level, and adjust with the shims if the columns are not level.

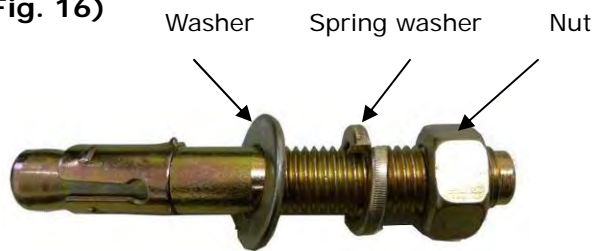


Fig. 15

G. Fix Anchor Bolts

1. Prepare anchor bolts. (See Fig. 16)

Fig. 16



2. Use a rotary hammer drill, and drill all the anchor holes and install the anchor bolts. Then tighten the Anchor Bolts (See Fig. 17).

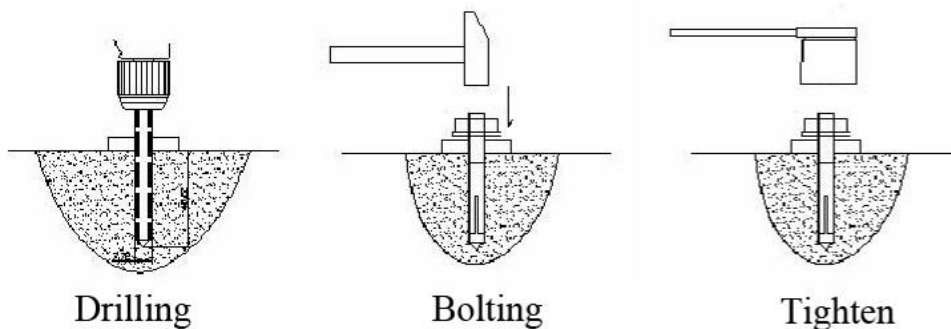


Fig. 17

H. Lift the carriages up by hand so they are engaged on the same lock levels.

(See Fig. 18).

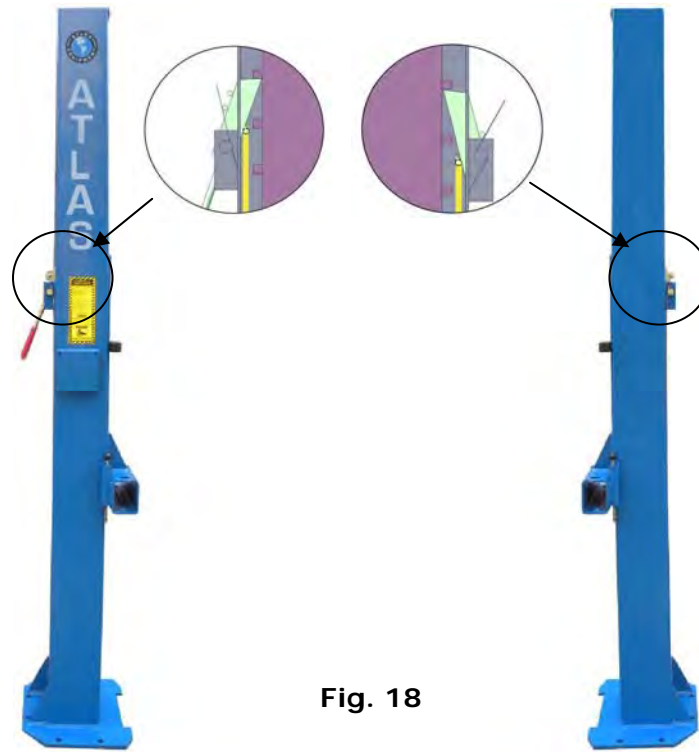


Fig. 18

I. Install Cable (See Fig. 19)

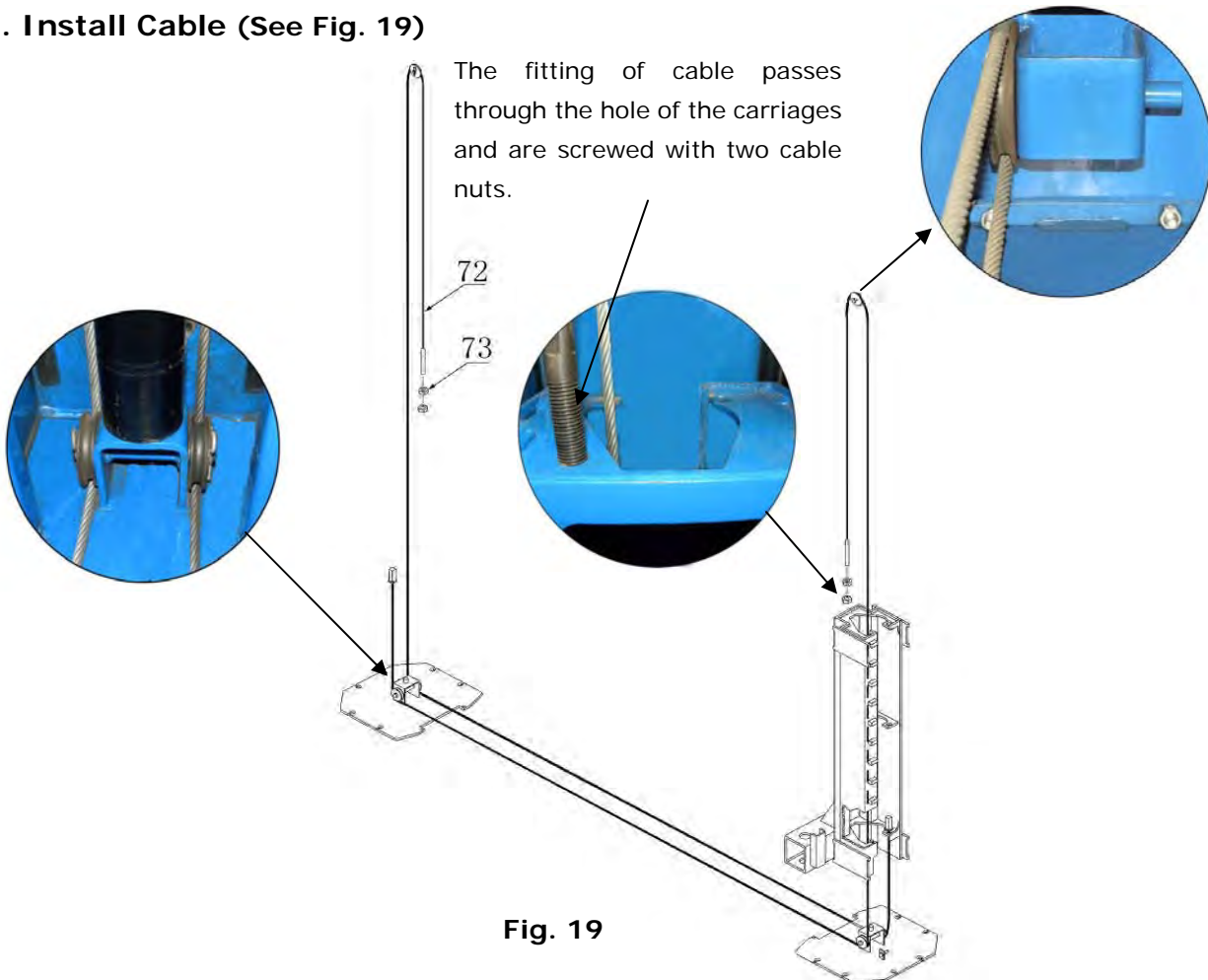


Fig. 19

J. Oil Hose Assembly (See Fig. 20).

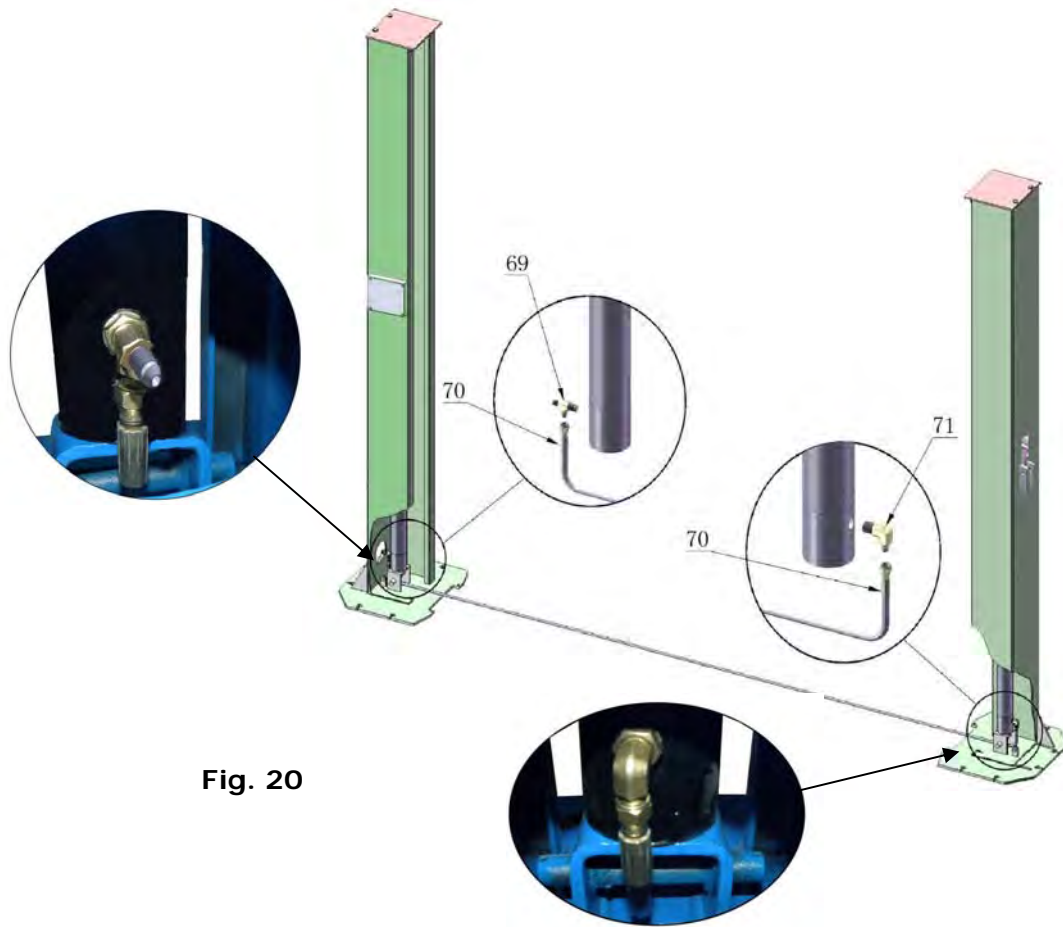


Fig. 20

K. Install Hydraulic Power Unit and Oil Hose Assembly. (See Fig. 21).

Note: Tighten the fittings on Hydraulic Power Unit and Oil Hoses.

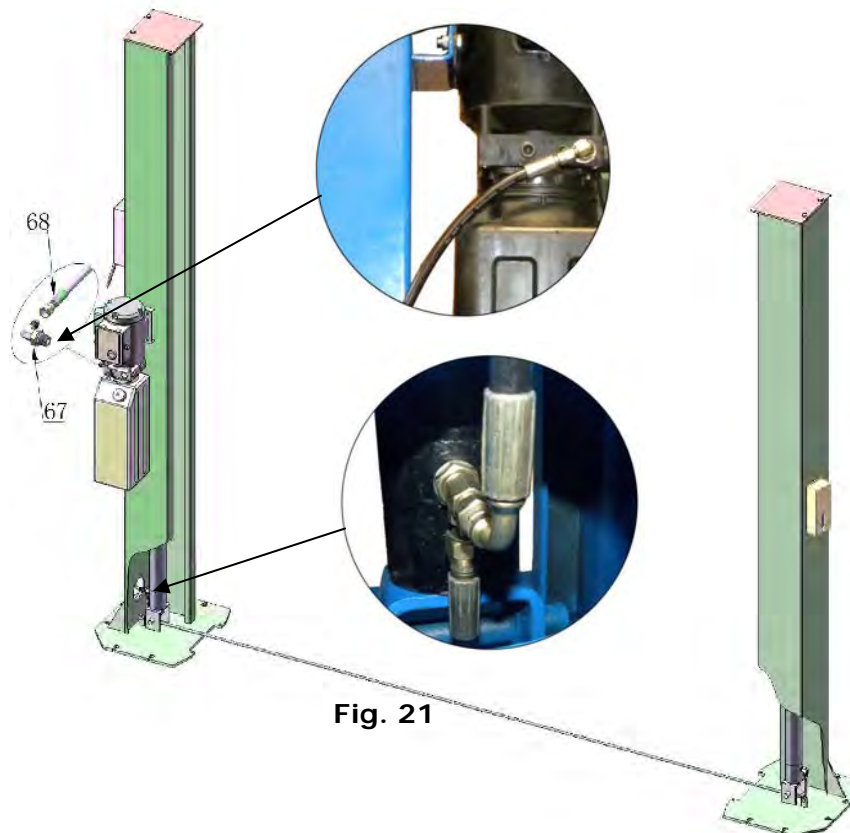


Fig. 21

L. Install Safety Device and Safety Cable (See Fig. 22).

NOTE: 1. Assemble Safety Cable from Offside Safety Assembly.

2. Please pay attention to the connecting direction of Safety Cable.

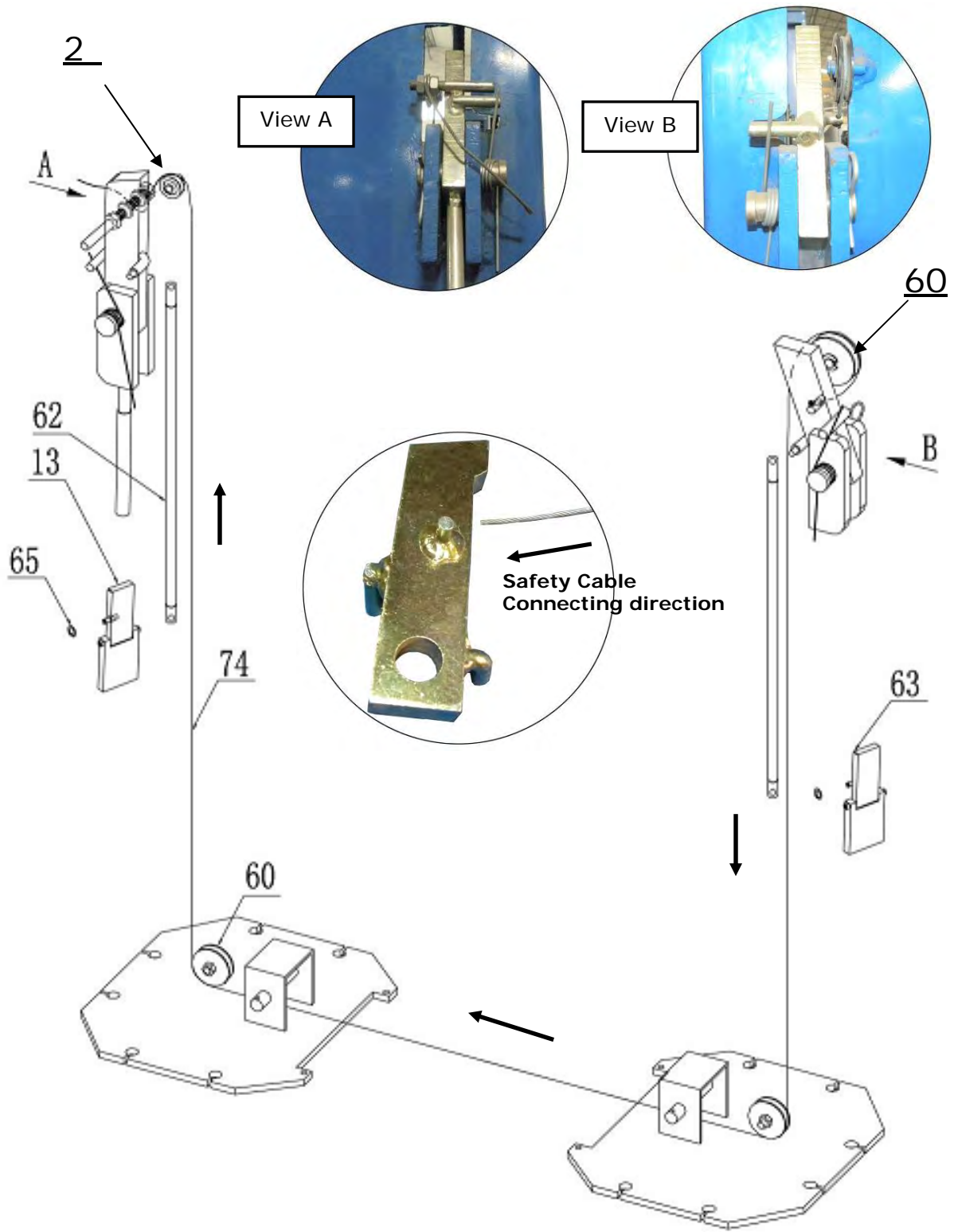


Fig. 22

M. Assemble Floor Cover and Protective Rubber Sets (See Fig. 23).

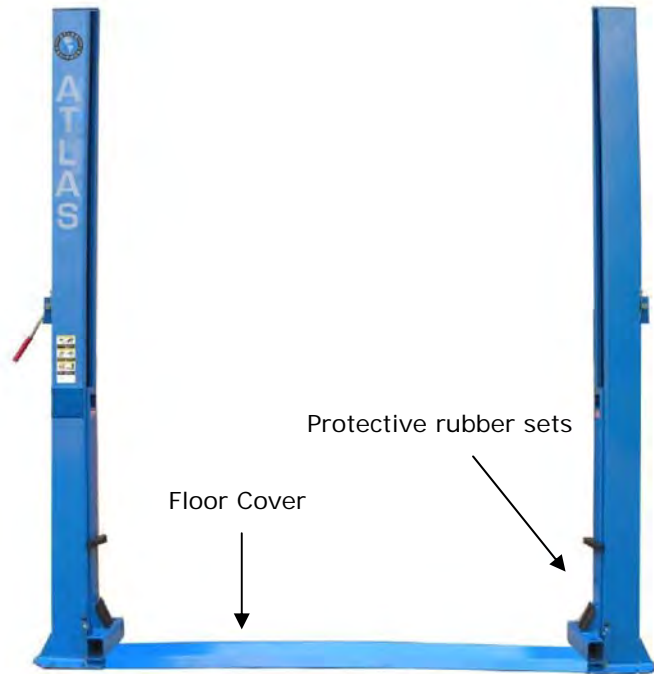


Fig. 23

N. Install Lifting Arms (See Fig. 24).

1. Install the Lifting Arms, adjust the Teeth of Arm Locks assembly it meshes with the Gear of Lifting Arm, then tighten the Hex Bolts of Arm Lock assembly.
2. Tighten all the hydraulic fittings, and fill the Reservoir with Hydraulic Oil.

Note: In consideration of Power Unit's durability and keep the equipment running in the perfect condition, please use Hydraulic Oil 46# or 32#

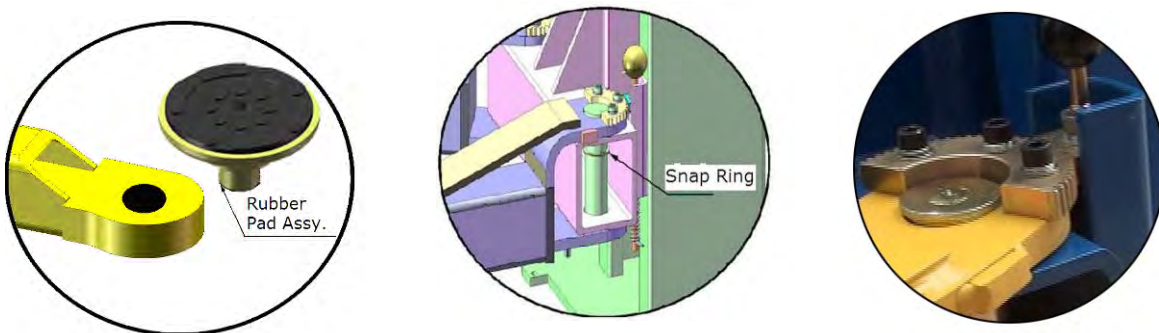


Fig. 24

O. Install Electrical System

Connect the power source according the data plate on Power Unit.

Note: 1. For the safety of the operators, the power wiring must contact the a ground.

1. Connect the two power supply lines (fire wire **L** and zero wire **N**) to terminals of AC contactor marked **L1, L2**.
2. Connect the two motor wires to terminals of AC contactor marked **T1, T2**.
3. Connect **A2** to **L2** of AC contactor.
4. The 2 wires on the control button connected with terminals of AC contactor marked **A1, L1**.
- 5.

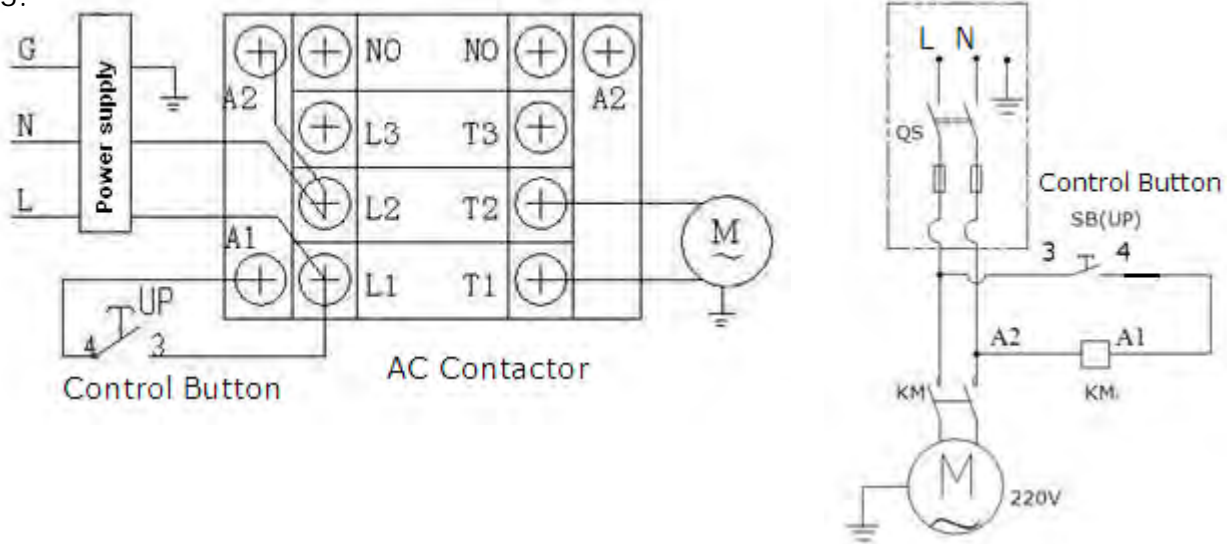


Fig. 25

IV. EXPLODED VIEW

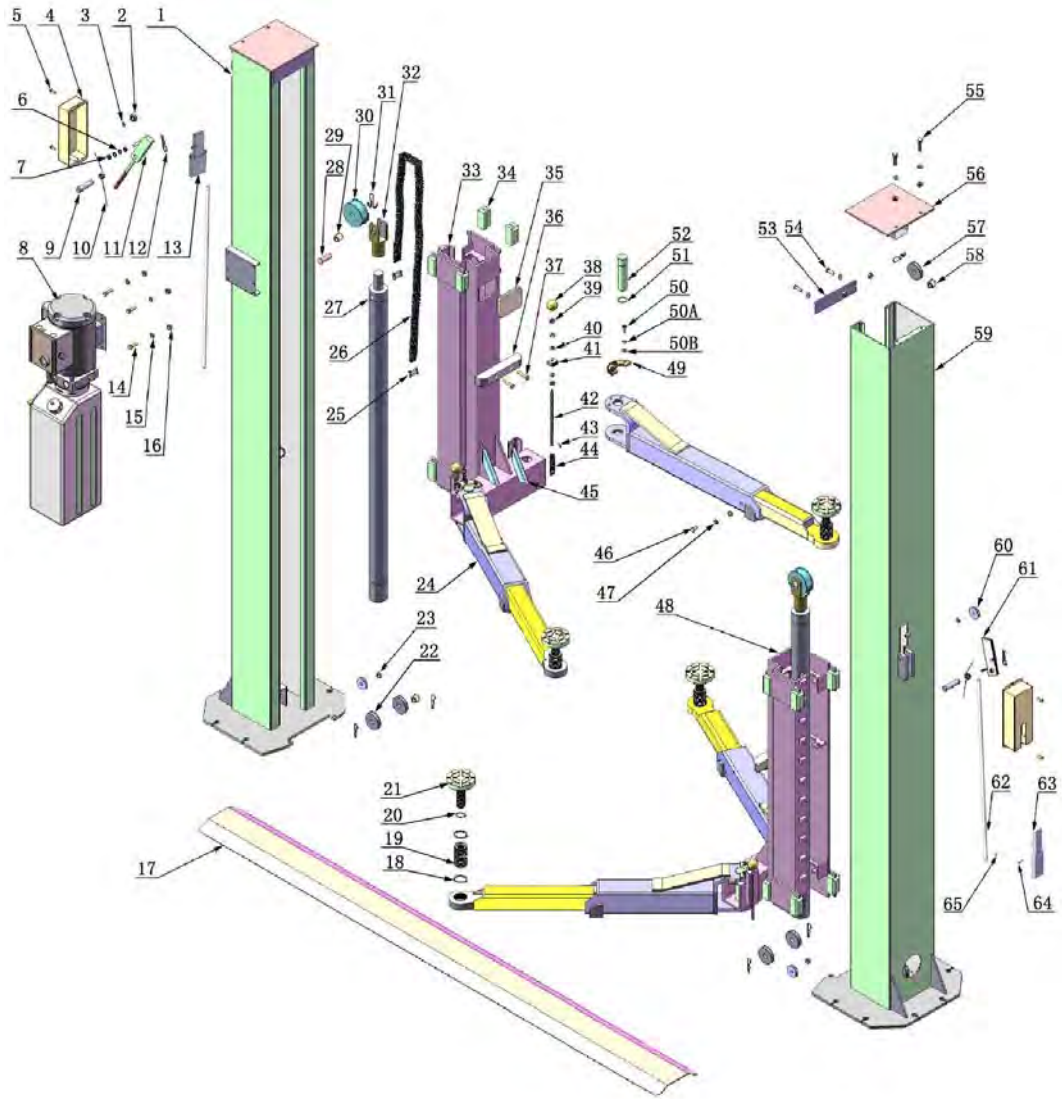


Fig. 26

Cylinders

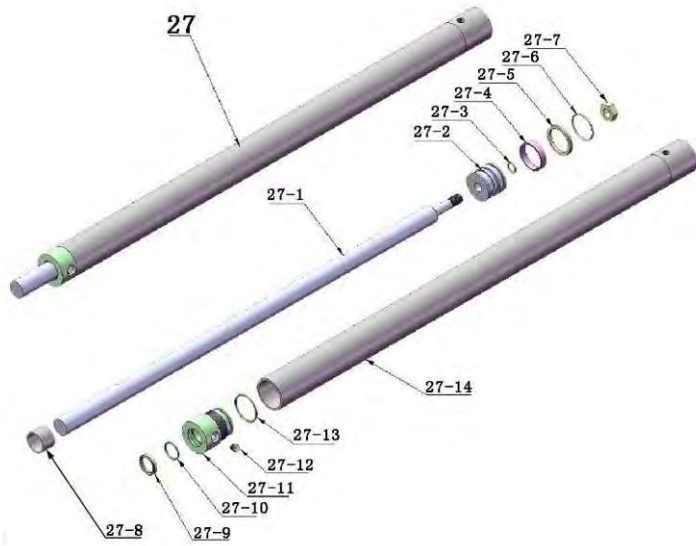


Fig. 27

Hydraulic Power Unit

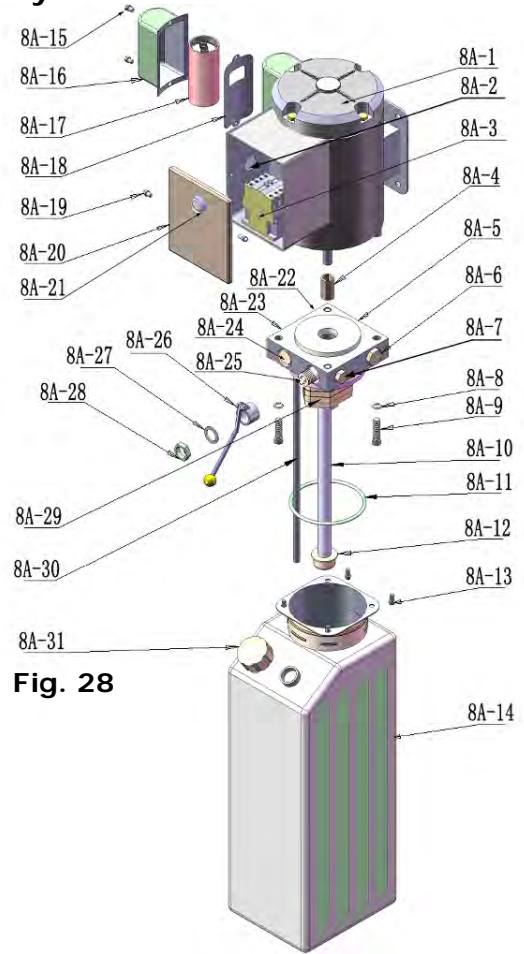


Fig. 28

Illustration of Hydraulic Valve hydraulic power unit (See Fig. 43)



Fig. 29

V. TEST RUN

1. Adjust Synchronizing Cable (See Fig. 44)

Use Spanner to hold the cable fitting, meanwhile
Use a Ratchet spanner to tighten the cable nut.
Make sure the two cables are with the same tension
so that the two carriages can work together.
Fit the hole cover on the lifting head.

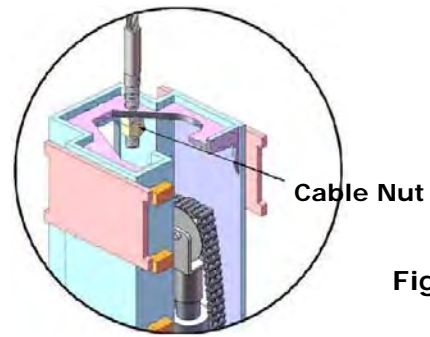


Fig. 30

If the carriage does not Synchronize when lifting , please adjust according to following the way: (See Fig. 45 & Fig. 46)

- a. Press the **UP** button to lift the carriages up to the same locking position.

- b. Loosen the safety cable by adjusting the lock nuts. Release the safety lock on the side that the carriage is in a higher position. The other side safety lock is in engaged. Lowering down the lift, the side with carriage in lower position would be locked, and the other side is unlocked. Continue to lower down the lift till both carriages are at the same level.

c. Tighten the cable nut of the synchronizing cables, then tighten the safety cable with the lock nuts, try to lift again, adjust the cables if needed.



Fig. 31



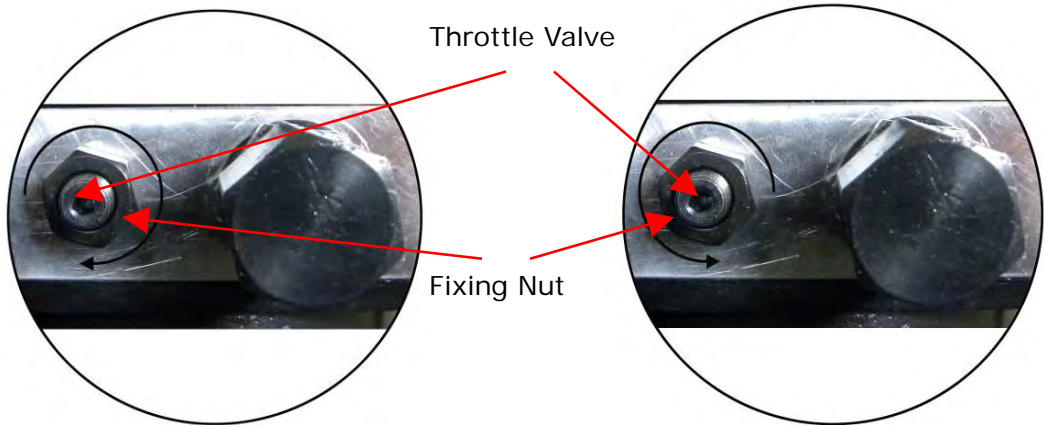
Fig. 32

2. Adjust Safety Cable

Lift the carriage and lock at the same height, pull the Safety Cable and then release a little, and then tighten the cable nuts.

3. Adjust the lower speed

You can adjust the lower speed of the lift if needed: Loosen the Fixing Nut of the Throttle Valve, and then turn the Throttle Valve clockwise to decrease the lower speed, or counterclockwise to increase the lower speed. Do not forget to tighten the Fixing Nut after the lower speed adjustment has been completed.



Clockwise to decrease the down speed

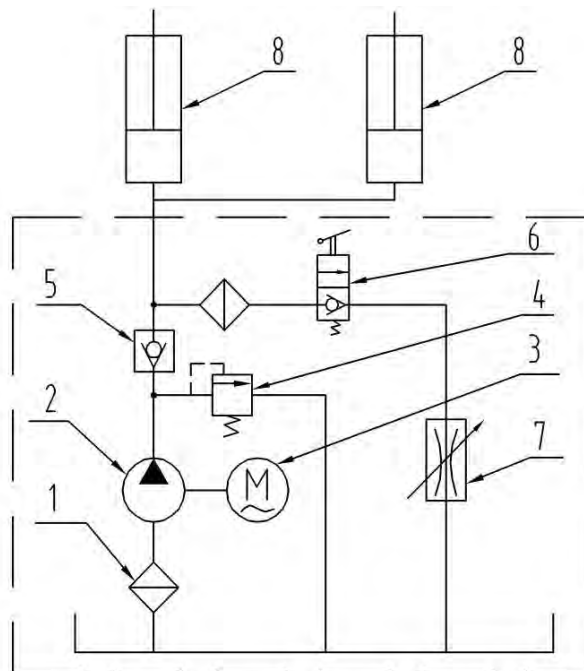
Fig. 33

Counterclockwise to increase the down speed

4. Test with load

After finishing the above adjustment, test run the lift with a load. Run the lift in the low position several times first, make sure the lift can raise and lower at the same time. Then test run the lift to the top.

NOTE: If the lift bounces with a load on it; up and down, the cylinders will require bleeding. This is done by loosening the oil hose connections at the bottom of the cylinders.



- NOTE**
- 1. Filter
 - 2. Gearpump
 - 3. Motor
 - 4. Relief Valve
 - 5. Check Valve
 - 6. Release Valve
 - 7. Throttle Valve
 - 8. Hydraulic Cylinder

VI. OPERATION INSTRUCTIONS

Please read the safety tips carefully before operating the lift

To lift vehicle

1. Keep area clean near the lift;
2. Position lift arms to the lowest position;
3. To shortest lift arms;
4. Open lift arms;
5. Position vehicle between columns;
6. Move arms to the vehicle's lifting point;

Note: The four lift arms must make contact at the same time. Contact the vehicle's lifting point where recommended by the manufacturer.

Press the **UP** button until the lift pads contact underside of vehicle. Recheck to make sure vehicle is secure;

7. Continue to raise the lift slowly to the desired working height, ensuring the balance of the vehicle;
8. Push lowering handle to lower lift onto the nearest safety. The vehicle is ready to repair.

To lower vehicle

1. Be sure the floor is clear around and under the lift, only leaving operator in lift area;
2. Press the button of **UP** to raise the vehicle slightly, and then release the safety device, lower vehicle by pushing lowering handle.
3. Open the arms and position them to the shortest length;
4. Drive away the vehicle.
5. Turn off the power.

VII.MAINTENANCE SCHEDULE

Monthly:

1. Re-torque the anchor bolts to 80-117 lbs;
2. Check all connectors, bolts and pins to insure proper mounting;
3. Lubricate cable with lubricant;
 - Make a visual inspection of all hydraulic hoses/lines for possible wear or leakage;
4. Check Safety device and its condition;
5. Lubricate all Rollers and Pins with 90wt. Gear oil or equivalent;

Note: All anchor bolts should take full torque. If any of the bolts do not function for any reason, DO NOT use the lift until the bolt has been replaced.

Every six months:

1. Make a visual inspection of all moving parts for possible wear, interference or damage.
2. Check and adjust as necessary, equalizer tension of the cables to insure level lifting.
3. Check columns for plumb.
4. Check Rubber Pads and replace as necessary.
5. Check Safety device and make sure proper condition.

. TROUBLE SHOOTING

TROUBLE	CAUSE	REMEDY
Motor does not run	<ol style="list-style-type: none"> 1. Button does not work 2. Wiring connections are not in good condition 3. Motor burned out 4. Height Limit Switch is damaged 5. AC contactor burned out 	<ol style="list-style-type: none"> 1. Replace button 2. Repair all wiring connections 3. Repair or replace motor 4. Replace the Limit Switch 5. Replace AC Contactor
Motor runs but the lift is not raised	<ol style="list-style-type: none"> 1. Motor runs in reverse rotation 2. Gear Pump out of operation 3. Release Valve in damage 4. Relief Valve or Check Valve in damage 5. Low oil level 	<ol style="list-style-type: none"> 1. Reverse two power wire 2. Repair or replace 3. Repair or replace 4. Repair or replace 5. Fill tank
Lift does not stay up	<ol style="list-style-type: none"> 1. Release Valve out of work 2. Relief Valve or Check Valve leakage 3. Cylinder or Fittings leaks 	Repair or replace
Lift raises slowly	<ol style="list-style-type: none"> 1. Oil line is jammed 2. Motor running on low voltage 3. Oil mixed with air 4. Gear Pump leaks 5. Overload lifting 	<ol style="list-style-type: none"> 1. Clean the oil line 2. Check Electrical System 3. Fill tank 4. Replace Pump 5. Check load
Lift can not lower	<ol style="list-style-type: none"> 1. Safety device are in activated 2. Release Valve in damage 3. Safety cable broken 4. Oil system is jammed 	<ol style="list-style-type: none"> 1. Release the safeties 2. Repair or replace 3. Replace 4. Clean the oil system

IX. BP8000 Parts List

Item.	Part No.	Description	Qty.	Note
1	205001	Power side Post	1	
2	209011	Plastic Pulley	1	
3	209010	Snap Ring	2	
4	209008	Safety Cover	2	
5	209009	Cup Head Bolt	4	
6	206006	Washer	2	
7	206023A	Hex Nut	2	
8	209002	Hydraulic Power Unit	1	
9	209006	Safety Pin	2	
10	209007	Safety Spring	2	
11	203002	Power side Safety Assy.	1	
12	209012	Hair Pin	8	
13	203015	Safety Block (Main Side)	1	
14	209003	Hex Bolt	4	
15	209004	Rubber Ring	4	
16	209005	Nylok Nut	8	
17	205002	Floor Cover	1	
18	206033	Snap Ring	8	
19	206034	Outer Screw	4	
20	206032	Snap Ring	4	
21	206031	Inner Screw Assy.	4	
22	209057	Small Pulley	4	
23	209056	Nylok Nut	2	
24	201039	Lifting Arm (screw-in)	4	
25	201010	Chain Connector	4	
26	201009A	Chain	2	
27	201008A	Hydraulic Cylinder	2	
28	201007	Pin For Chain Pulley	2	
29	203004A	Bronze Bush For Chain Pulley	4	
30	201006	Chain Pulley	2	
31	201005	Split Pin	2	
32	201004	Chain Pulley Assy.	2	
33	205003	Power side Lifting Head	1	
34	206044	Slider	16	
35	209016	Carriage Plastic Cover	2	
36	206045	Protective Rubber	2	
37	206046	Self-tapping Screw	4	
38	209020	Plastic Ball	4	
39	209021	Hex Nut	12	

Item.	Part No.	Description	Qty.	Note
40	209022	Washer	12	
41	209023A	Teeth	4	
42	209024	Arm Lock Bar	4	
43	209025	Hair Pin	4	
44	209026	Spring	4	
45	209027	Protective Rubber Set	4	
46	209038	Hex Bolt	4	
47	209039	Spring Washer	12	
48	205004	Offside Lifting Head	1	
49	209035	Gear	4	
50	209032	Socket Bolt	12	
50A	209034	Spring Washer	12	
50B	209033	Washer	20	
51	209031	Snap Ring	4	
52	209030A	Lifting Arm Pin	4	
53	205005	Connecting Bar	2	
54	209043	Hex Bolt	4	
55	209046	Hex Bolt	4	
56	205006	Top plate	2	
57	209045	Big Pulley	2	
58	209057A	Bronze bush for Pulley	6	
59	205007	Offside Post	1	
60	209049	Plastic Pulley	3	
61	203012	Offside Safety Assy.	1	
62	203013	Coupling	2	
63	203014	Safety Block (Second Side)	1	
64	203018	Socket Bolt	4	
65	203016	Snap Ring	2	
66	209059	Anchor bolt	12	
Oil Hose, Fitting & Cable (See Fig. 26, Fig. 27 Fig. 28 & Fig. 29)				
67	209060	90° Fitting for Hydraulic Power Unit	1	
68	201021	Oil Hose	1	
69	201022	T-Fitting	1	
70	205008	Oil Hose	1	
71	201020	90° Fitting	1	
72	205009	Cable	2	
73	209066	Cable Nut	4	
74	205010	Safety Cable	1	

Optional Amy Kits with Stackable Adaptors (See Fig. 37)

Item.	Part No.	Description	Qty.	Note
75	201040	Lifting Arms (drop-in)	4	
76	680030	Rubber Pad Frame Support	4	
77	209053	Stackable Adapter (6")	4	
78	209051	Stackable Adapter (1.5")	4	
79	209052	Stackable Adapter (3")	4	

Parts For Hydraulic Cylinder (See Fig. 39)

27-1	201027A	Piston Rod	2	
27-2	201028	Piston	2	
27-3	206069	O-Ring	3	
27-4	201029	Support Ring	2	
27-5	201030	Y-Ring	2	
27-6	201031	O-Ring	2	
27-7	206071	Hex Nut	2	
27-8	201037	Adjustment Tube	2	
27-9	209078	Dust Seal	2	
27-10	201032	O-Ring	2	
27-11	201033	Head Cap	2	
27-12	201034	Bleeding Plug	2	
27-13	201035	O-Ring	2	
27-14	201036A	Bore Weldment	2	

BP8000 Power Unit Parts List

Item.	Part No.	Description	Qty.	Note
8A-1	209082A	Motor	1	
8A-2	209109	Protective Ring	1	
8A-3	209112	AC contactor	1	
8A-4	209083A	Motor Connecting Shaft	1	
8A-5	209084A	Valve Body	1	
8A-6	209085A	Relief Valve	1	
8A-7	209113	Throttle valve	1	
8A-8	209086A	Spring Washer	4	
8A-9	209087A	Socket Bolt	4	
8A-10	209088A	Inlet Pipe	1	
8A-11	209089A	O-Ring	1	
8A-12	209090A	Filter	1	
8A-13	209091A	Socket bolt	4	
8A-14	209092A	Reservoir	1	
8A-15	209093A	Cup Head Bolt	4	
8A-16	209094A	Cover of Capacitor	2	
8A-17	209095A	Capacitor	2	
8A-18	209096A	Rubber Gasket	2	
8A-19	209097A	Cup Head Bolt	2	
8A-20	209098A	Cover of Motor Terminal Box	1	
8A-21	209099A	Push Button	1	
8A-22	209110A	Oil Return Port	1	
8A-23	209100A	Oil Outlet	1	
8A-24	209105A	Check Valve	1	
8A-25	209101A	Release Valve	1	
8A-26	209102A	Handle For Release Valve	1	
8A-27	209103A	Washer	1	
8A-28	209104A	Hex Nut	1	
8A-29	209106A	Gear Pump	1	
8A-30	209107A	Oil Return Pipe	1	
8A-31	209108A	Filler Cap	1	