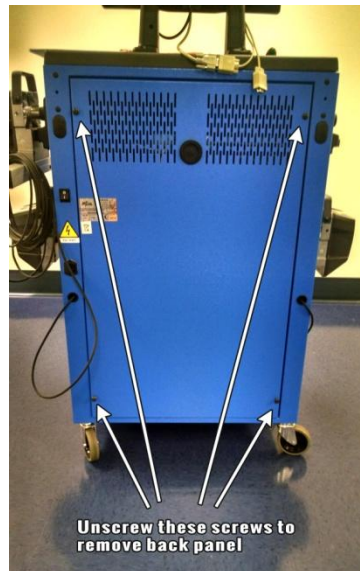


Unpacking your new 401/601 Atlas Alignment Machine

Congratulations on the purchase of your new Atlas Alignment Machine. This memo is provided to get you up and going in the fastest possible manner.

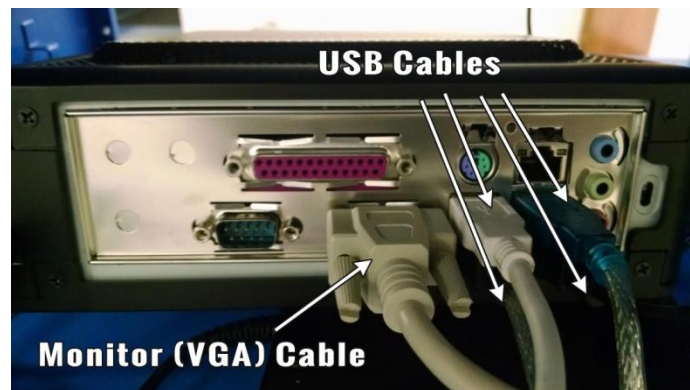
1. Your machine is ready to go out of the box. There is no need to install software, calibrate, or do anything other than proceed with cable installation.
2. Unscrew the four screws on the front panel of the machine and four screws on the back cover of the machine. Note: the back cover will have a ground wire attached so be careful not to pull it loose when you set this to the side.



3. If you have a 601 model the only connections that will need to be made will be at the back of the computer. You will plug in the usb cables, monitor cable (VGA) and power cable.

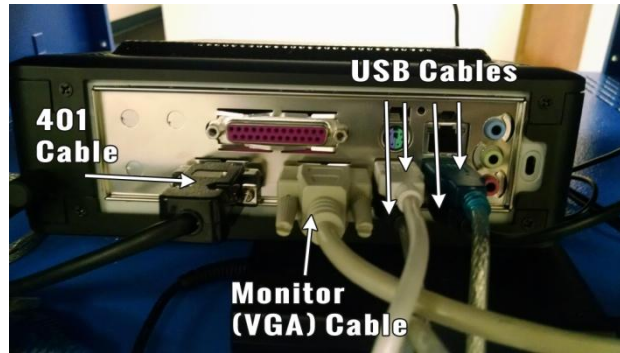


Blank CPU



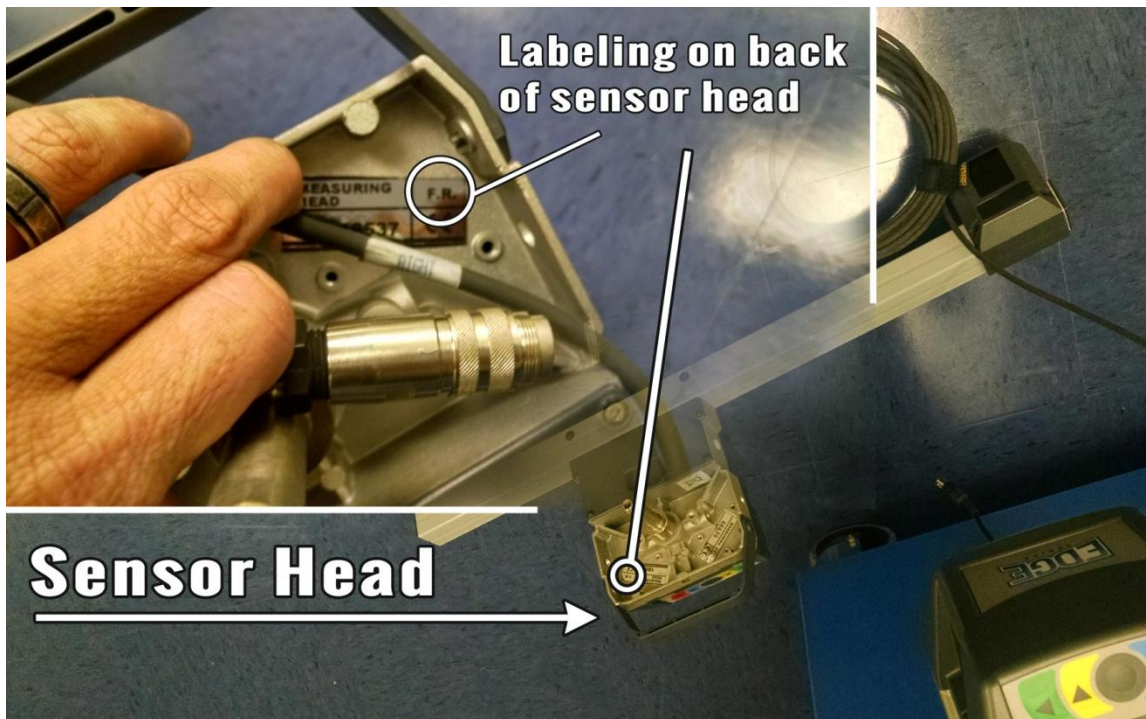
601 Connected

4. If you have a 401 model it is the same except you will have one additional connector next to the monitor cable.



401 Connected

5. On the 401 model you will notice that the cables have left and right written on the end of the cable. Connect these according to your sensor head position. If you are unsure each head is marked on the back with two letters. (F.L.) = front left, etc, etc. The 601 is wireless so this step will not apply on cable connection.



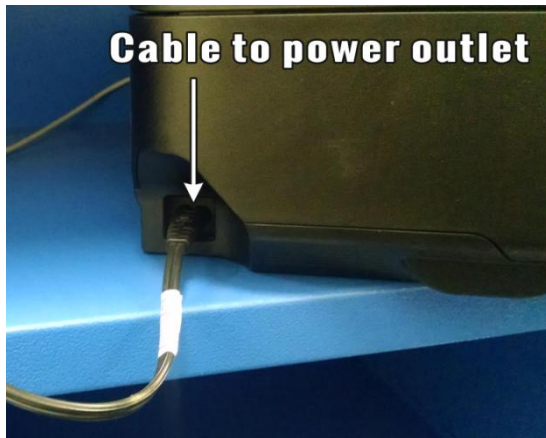
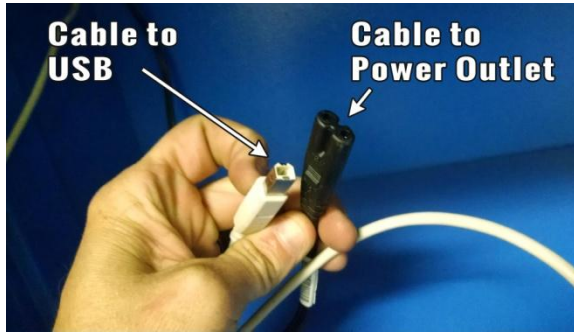
- The computer will have a disk and a flash drive in the box with it. You DO NOT need to do anything with these items. Put them in a safe place that you know you can access them later. They will be used only during a remote support session for memory purposes.



- You will also receive a card. This will be inserted into the mounted card reader as shown below. This card contains the aligner's "identity" and database and must stay in the card reader at all times for it to operate properly. Do Not Lose This Card!



8. The printer will be the last connection you need to make. It will be an USB cable from computer to back of printer and a power cable from power strip (back of unit) to printer. An adapter is supplied but not needed in most cases.



Your completed connections. You can now replace the screws on the front and rear covers and begin enjoying your Atlas Alignment Machine!!

